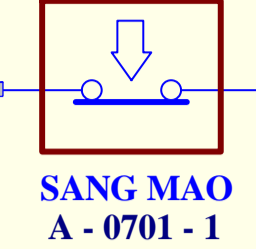


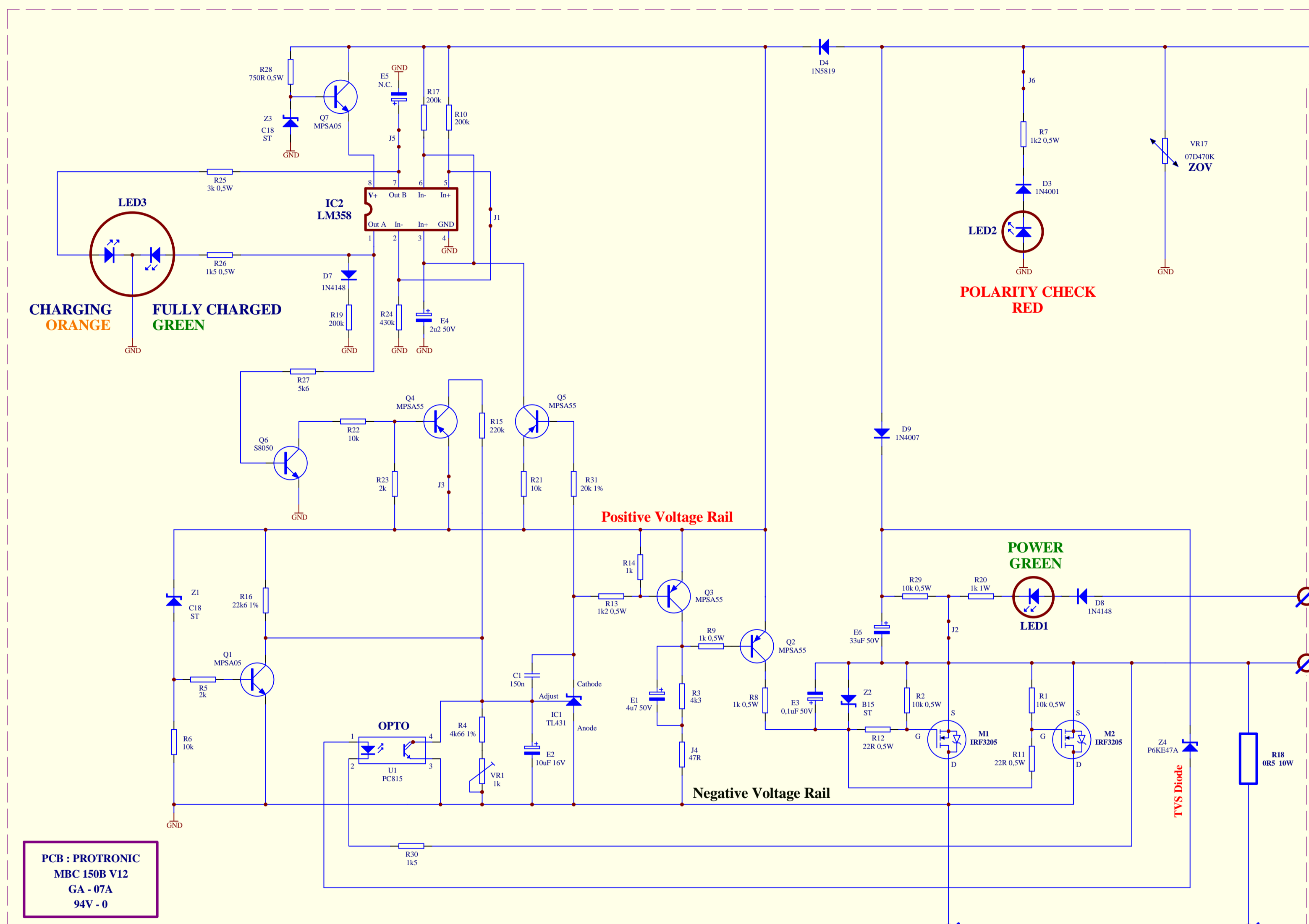
Automatic Reset Circuit Breaker

40 Amper



D5, D6, D10, D11 DIODE PCB:
VECO 78 VOOC 2009.05.26
GA - 05
94V - 0

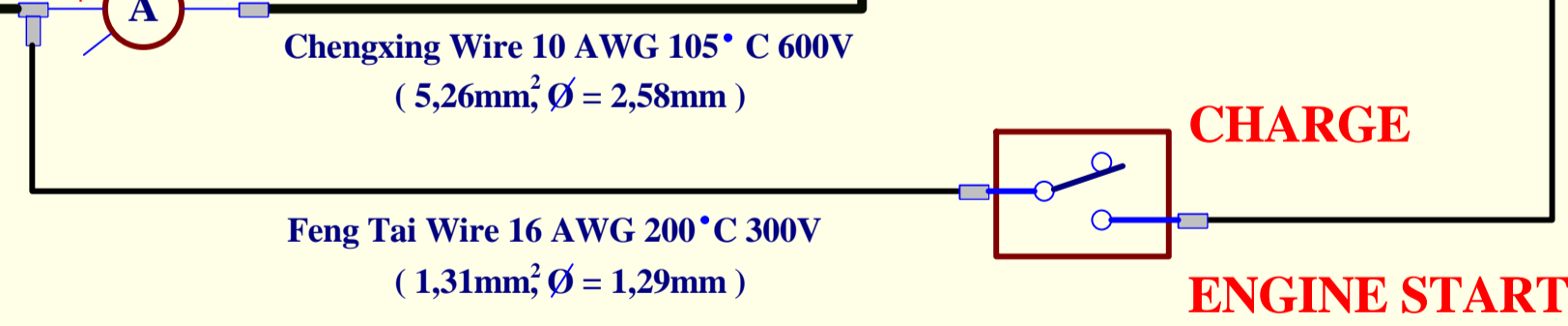
POSITIVE LEAD TO BATTERY



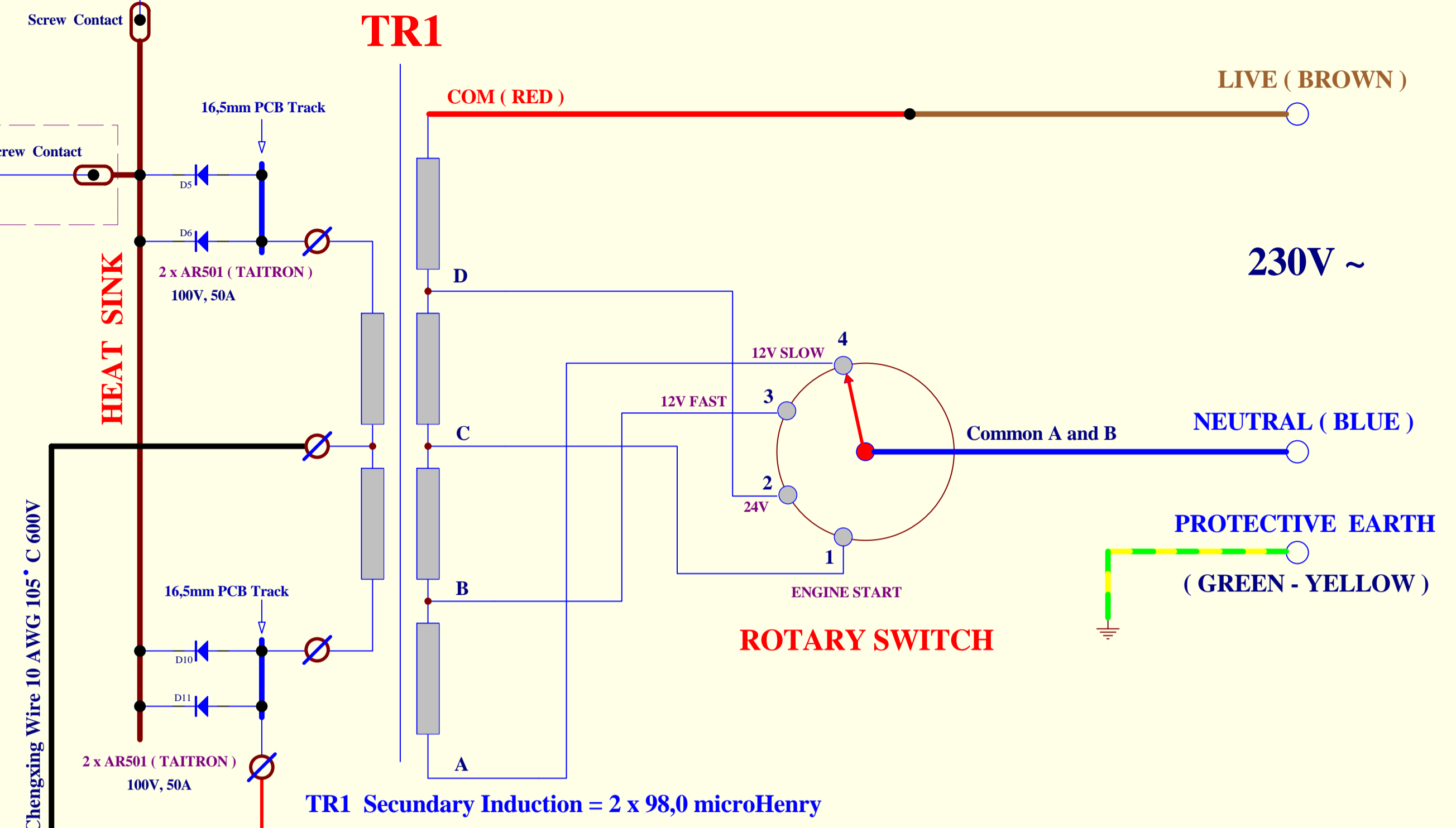
PCB : PROTRONIC
MBC 150B V12
GA - 07A
94V - 0

NEGATIVE LEAD TO BATTERY

CHARGE CURRENT



TOGGLE SWITCH



TR1

COM (RED)

LIVE (BROWN)

230V ~

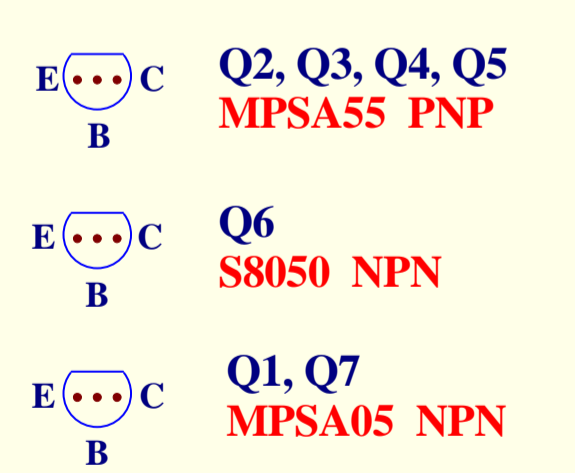
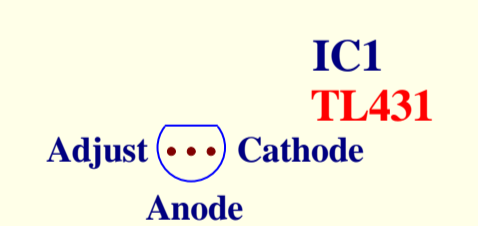
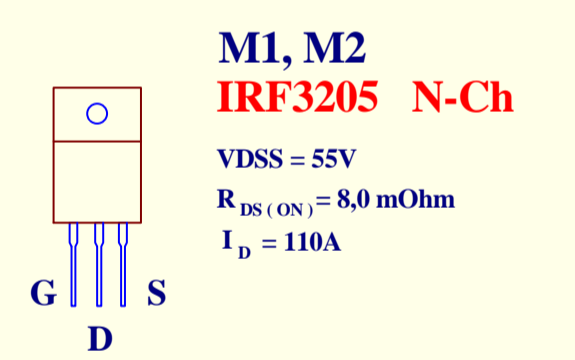
NEUTRAL (BLUE)

PROTECTIVE EARTH
(GREEN - YELLOW)

ROTARY SWITCH

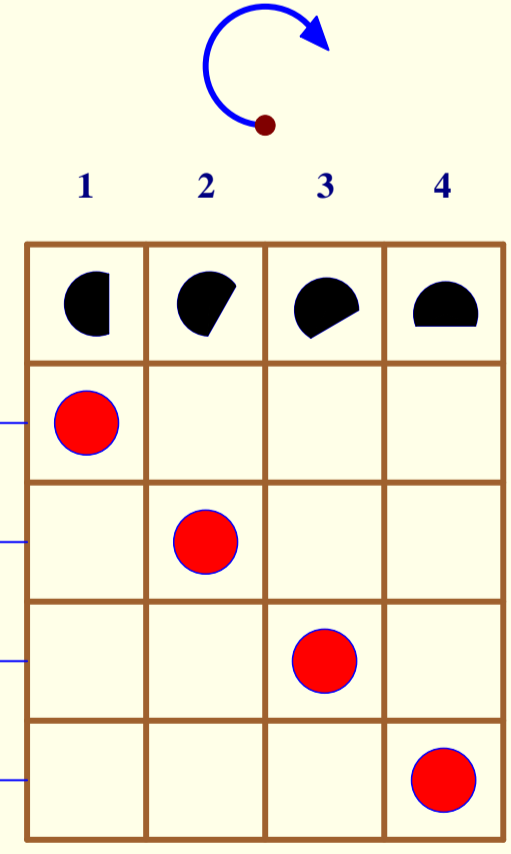
TR1 Secondary Induction = 2 x 98,0 microHenry

BAOKEZHEN SC725 ROTARY SWITCH		
MODE SELECT	SWICH POSITION	INDUCTION
ENGINE START	1. COM - C	Lx = 324 mH
24V	2. COM - D	Lx = 301 mH
12V FAST	3. COM - B	Lx = 859 mH
12V SLOW	4. COM - A	Lx = 1,36 H



The not marked resistors : 1/4 W

AXIAL ROTATION



Automotive Fully Automatic 22amp Battery Charger
22amp: 12V/24V Dual Voltage Fast/Slow Settings with 150amp Engine Start

http://www.letonkinoisvarnish.co.uk/RAC_ChargerRepair_1.html

After Roy Murkin AMIEE

Compatible type : RAC HP027

Title		
Size	Number	Revision
A1		
Date:	16 Jun 2018	Sheet of 1 / 1
File:	C:\AD\SCH\RECB322.SCH	Drawn By: Zoltan Holcs Sr.